



Inox/SST 6 & 10 sprayers

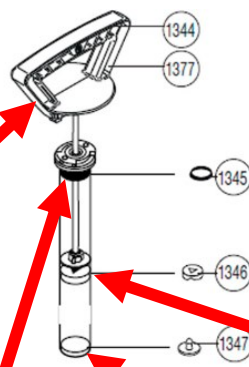


Inox/SST 6, 6L sprayer
P/No: IK INOX/SST 6
 (8.33.73)

Inox/SST 10, 10L sprayer
P/No: IK INOX/SST 10
 (8.33.74)

Nozzle assembly
 Nozzle and elbow.
P/No:
 IK INOX/SST-NOZZLE
 (8.32.72.803)

Elbow
P/No:
 IK INOX/SST-ELBOW
 (8.34.44.8151)



Pump
 Complete chamber.
P/No:
 IK INOX/SST 10-PUMP
 (8.33.72.601)

O-Ring
P/No:
 IK INOX/SST-ORING
 (8.33.72.312)

Valve seat
P/No:
 IK INOX/SST-VALVE SEAT
 (8.33.72.314)

Seal
P/No: IK INOX/SST-SEAL
 (8.33.72.313)



Inox/SST 6 & 10 sprayers (Continued)



Hose

P/No: IK INOX/SST-HOSE
(8.32.72.835)



Handle

P/No:
IK INOX/SST-HANDLE
(8.18.75.816)



Tube

With nuts.
P/No: IK INOX/SST-TUBE
(8.32.72.828)



Pressure Gauge

P/No:
IK INOX/SST-GAUGE
(8.33.72.603)



Safety valve

P/No:
IK INOX/SST-SAFETY VALVE
(8.33.72.602)



Telescopic lance—3.2M

P/No:
IK FP/MP/ALK-LANCE 3.2
(8.35.40.913)

Telescopic lance—5.4M

P/No:
IK FP/MP/ALK-LANCE 5.4
(8.35.40.915)

Lances may not be suitable for all chemicals. Suitability depends on chemical strength and proper cleaning after use. Please check compatibility before application.